

Diamond Drill

Out of the Past

August 15, 1973

The makeshift rubber tired "locomotive", concocted by Bob Jean of Iron River and with the assistance of new owner Joe Rossi is in the final stages of production. The ghost from the past, a smoke belching replica of an old time steam railroad locomotive was built from a conglomeration of mismatched parts. The unit was assembled from a boiler from a stationary power plant from a pioneer sawmill, pistons and hardware scavenged from disabled mining company steam shovel and discarded truck transmission. Rossi intends to display the machine in upcoming parades throughout local area.

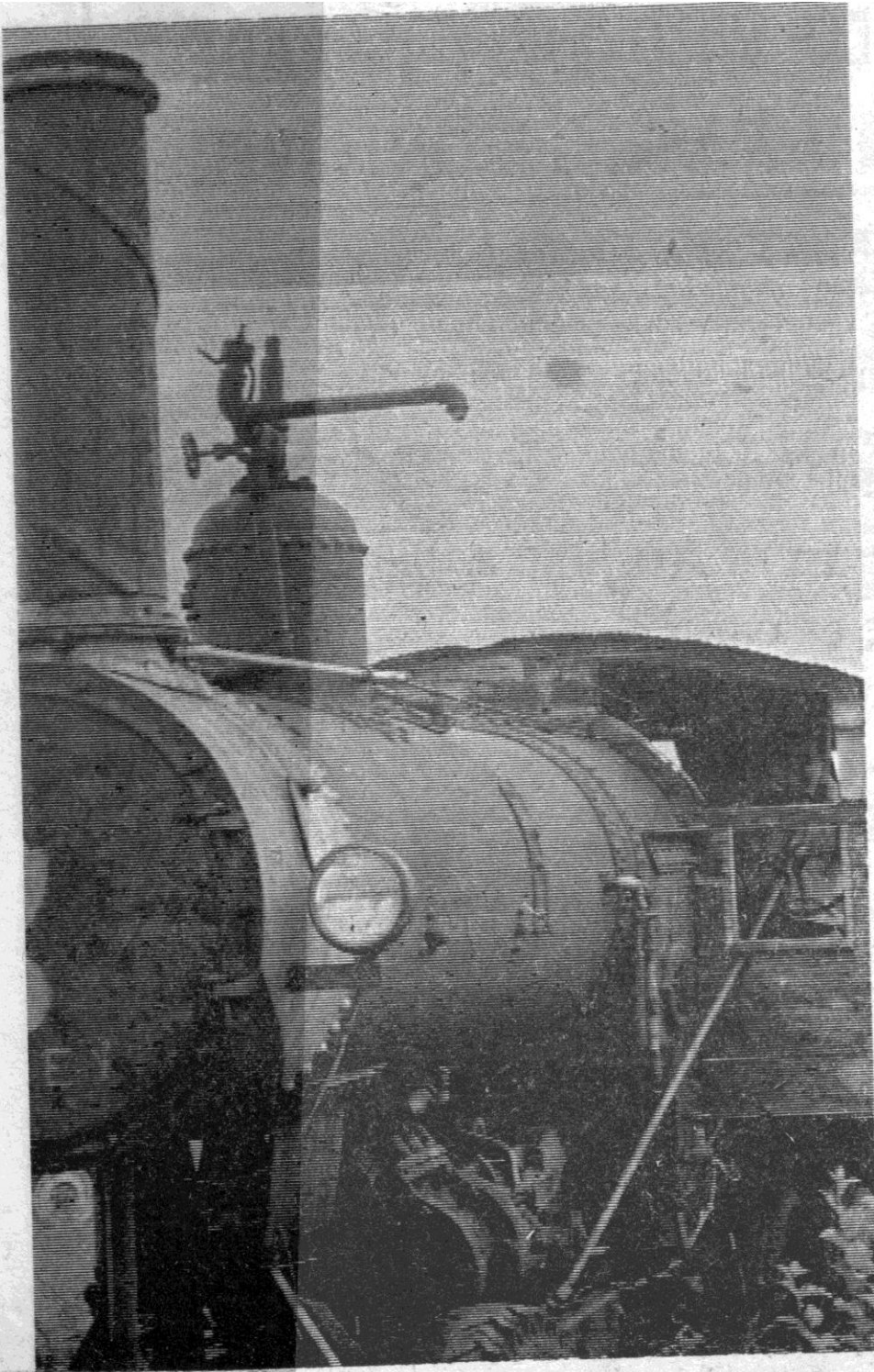
Sharon Heimerl, daughter of Mrs. Joe Burke of Amasa, was selected Queen to reign over V-J Day celebrations. Her court consisted of Lori McGregor, daughter of Mr. and Mrs. Eugene McGregor and Cindy Smithson, daughter of Mr. and Mrs. Lyle Smithson.

Ad: The new Texas Instruments pocket electronic calculator puts precision, efficiency and confidence into your personal mathematics. It adds, subtracts, multiplies and divides instantly. \$84.95 Diamond Drill (229 Superior).

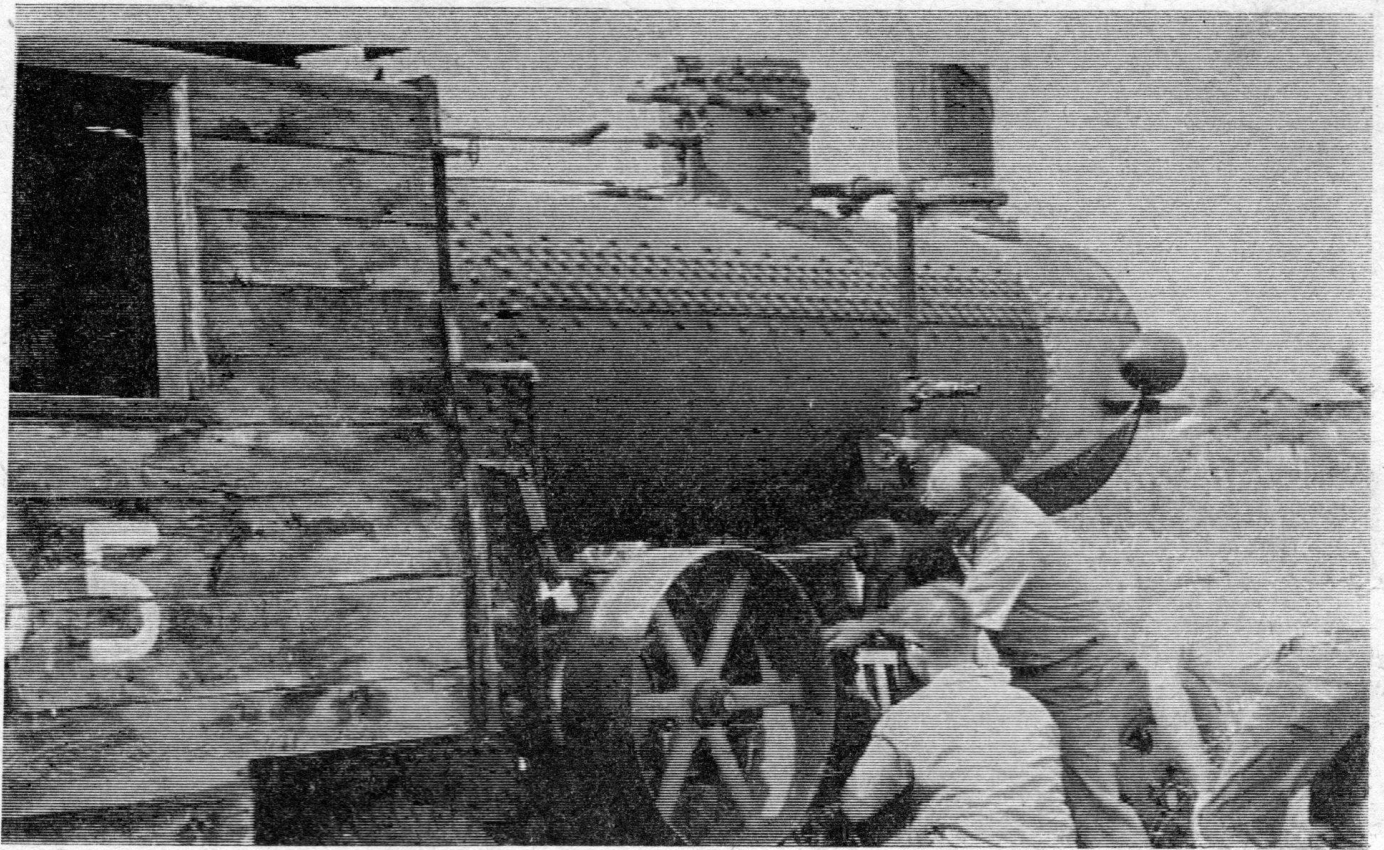


THE NARROWD GAUGE logging railroad that once served the Mansfield township area was recalled Saturday by this rubber tired "locomotive," entered in the parade by Rossi's Valley View Motel. It

was first place winner. Engineer in charge, complete with railroading hat, was Mansfield township supervisor Francis Drake. His fireman was a brother, Joe Drake, from L'Anse.



A HEAD-ON VIEW of the makeshift rubber tired "locomotive" concocted by Bob Jean of Iron River, does indeed give the impression of not less than an old time yard engine. Joe Rossi, Crystal Falls, who accepted the machine as a gift of Jean after the latter developed storage problems, intends to enter it in the "Mansfield Memories" parade (under its own power, says Joe!).



INSPECT ENGINE — Joseph Rossi and Bob Jean inspect the governor assembly of a working ghost out of the past — a steam engine. Jean built the rig, using a boiler from a stationary power plant in a pioneer sawmill. The pistons and other engine hardware were donated by a min-

ing company, from a disabled steam shovel. A truck transmission was added by Jean, and the end result is a smoke-belching replica of a train. Rossi and Jean recently held a shakedown at the old A. L. Haight airport, and are happy to report the darn thing works.