

Diamond Drill

Out of the Past

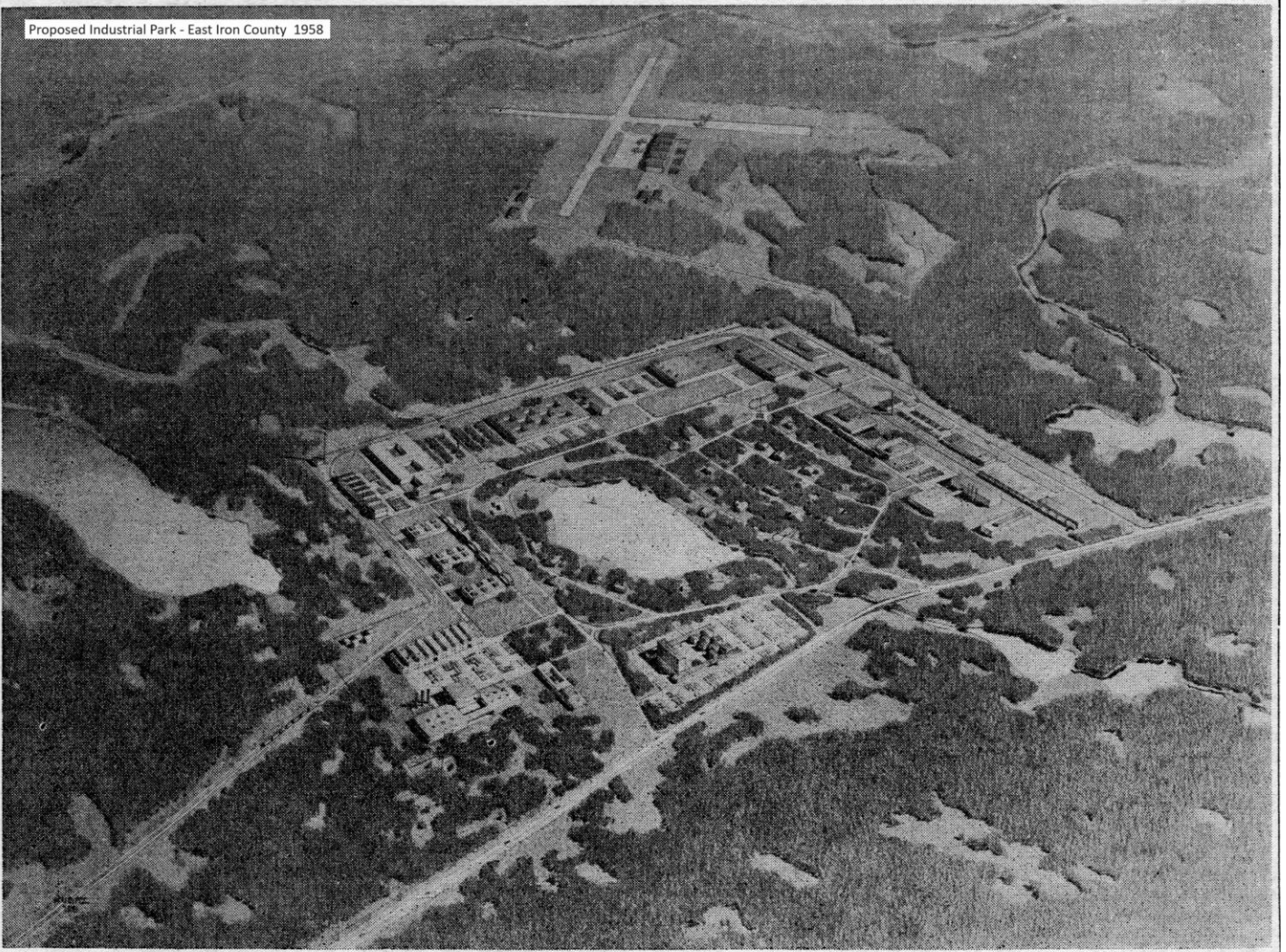
December 18, 1958

Sixteen teams are competing in the Crystal Falls Public Schools intramural basketball program. Three leagues comprise the circuit; a six team Intermediate for boys from 5<sup>th</sup> and 6<sup>th</sup> grades, a six team Junior High and a four team High School league. The Saturday morning contests are supervised by coaches Bob Boldt and Jack Temple using both the High School and Forest Park gyms.

The purchase of a new garbage truck with a Leach packer body has been authorized by the Crystal Falls Township Board. Currently only about one third of the Townships area is offered garbage removal service. With the new truck and its hydraulic packer the service area will be extended because of the reduced number of trips to Township dump required.

Local officials are discussing the possible construction of an East Iron County Industrial Park. A proposed 580 acre site located South of Crystal Falls on Highway US-2 near the proposed Iron County Airport and Little Tobin Lake would provide future economic growth to the local area.

Proposed Industrial Park - East Iron County 1958



**A DREAM?**—Shown above is the architect's conception of how the East Iron Planned Industrial Park might look when it is fully occupied. The view is from the northwest, looking to the southeast, with U. S. 2-141 running from lower left to right center. Iron County air port is in the background and Little Tobin lake lies

in the center of the 580 acre site. This drawing will be the central subject in a brochure to be produced by the interest that eventually will assume the task of promoting the area. Smith and Smith, architects of Iron Mountain and Royal Oak, prepared the drawing.