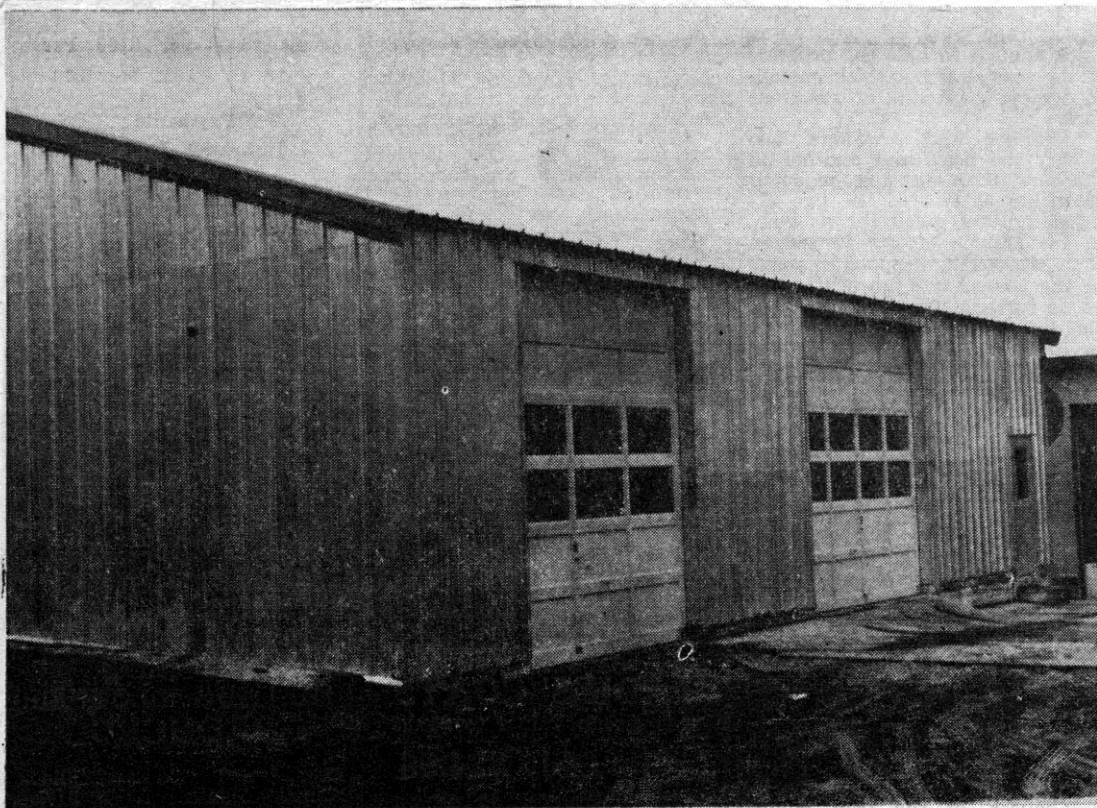


Diamond Drill

Out of the Past

December 1, 1960

Major improvements at two Crystal Falls business places are almost complete with only interior work remaining unfinished. The Ahlberg Pontiac and Implement building (45 Superior) had added a (36' x 54') Butler building addition to the rear of their existing store to serve as a tractor and farm implement repair area. The shop in the main building will be used for automobile and light truck repair and servicing only. Owner Arnold Ahlberg constructed original building and opened the business at the location in April 1948. Malkin & Sons (11 Superior) have added a (60' x 60') foot addition to the rear of their existing building which will house a heavy equipment, truck and farm equipment repair and service shop. The new large 14' doors make it possible to handle large equipment which would not fit through the smaller doors of the existing main building. The space used for repair operations before will now be converted for use as parts storage area. Malkin & Sons began erection of their existing building in 1947 and had a grand opening for the business in January 1948.



MAJOR IMPROVEMENTS at two Crystal Falls business places were almost complete last weekend, with only interior work remaining unfinished. At the top is a 36-54 Butler building added as a tractor and farm implement repair area at the Ahlberg Pontiac and Implement building. The new shop will be supervised by Ed St. Lewis, who formerly operated Ed's Tractor Service in Iron River, purchased recently by Ahlberg. The two businesses will be conducted by Ahlberg under one roof. The shop in the main building will be used for automobile and light truck servicing only. — Below is the 60 x 60 foot addition to the Malkin & Sons building on lower Superior avenue, built to house a heavy equipment, truck and farm equipment repair and service shop. Two large 14 foot doors make it possible to handle large equipment which would not fit through the smaller doors on the main building. The area used for repair operations before, will now be converted for parts storage. Access to the new building will be by means of a road leading from Superior avenue to the alley between Superior and Marquette. (Drill Photos)

