

Diamond Drill

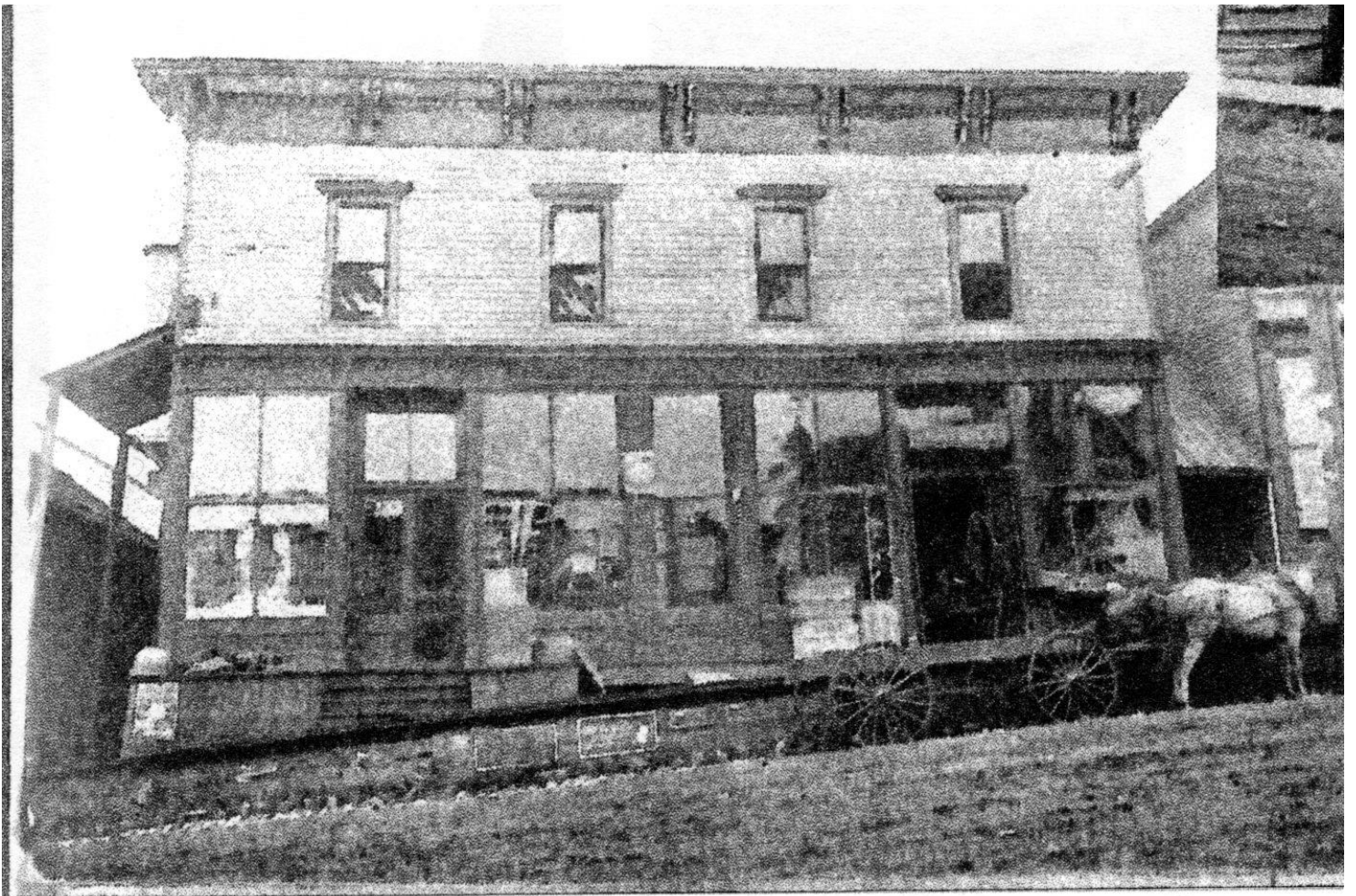
Out of the Past

September 14, 1895

J.H. Parks is making many improvements to his double store building formerly occupied by Messrs. Burder & Johnson (309 Superior). He will build a new stone foundation under the structure to make a first-class cellar, repaint the building inside and out and make such improvements and repairs as are necessary. The firm Parks & Co. began business in Crystal Falls in 1882 and also opened a store at the Dunn Mine Location.

Witbeck & Company have bought 18 million board feet of standing timber from the Davis-Holmes Co. on the Fence River for \$85,650, the highest price ever paid for stumpage in this large a quantity.

Edward Sweeney has taken upon himself the laborious task of raising funds for the work of making the Crystal Falls Cemetery a respectable resting place for the dead. To date he has raised \$228.50 from donations and has spent \$266.26. Since opening in 1887 the Cemetery has over 100 burial sites. (Note: 2023 = 8,000 burials).



Parks Store - 309 Superior 1890's