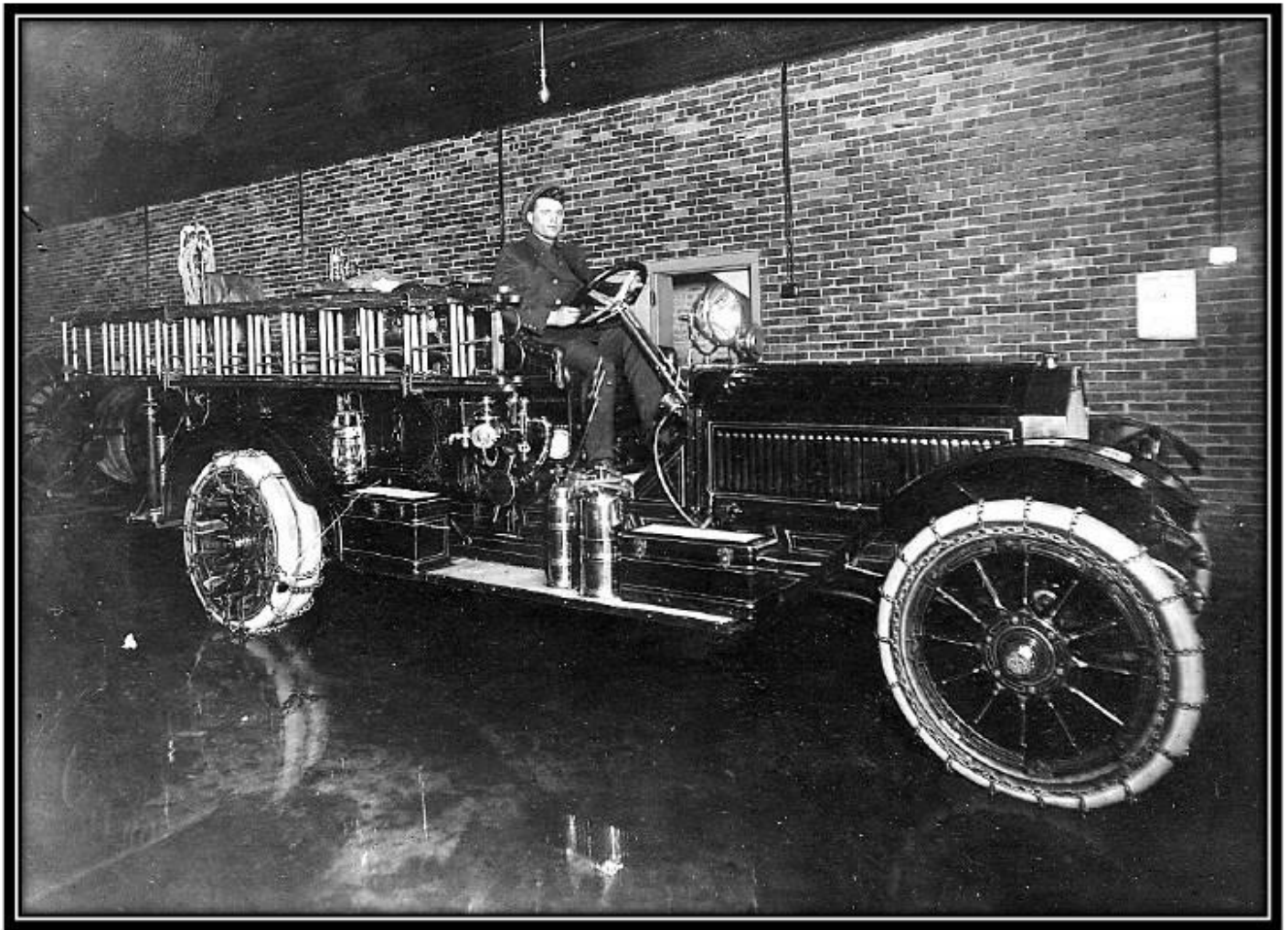


Diamond Drill

Out of the Past

October 23, 1925

The Crystal Falls City Fire Department's additional new American LaFrance fire truck ordered in June was delivered via railroad car. It is the same model as the existing American LaFrance fire truck purchased in 1915 and has practically the same appearance. Many refinements and updates are available with the new truck. It features a dual ignition system which minimizes the chances of ignition failure; if one set of spark plugs is not firing the other set will most likely remain in order. Another new feature is the "booster tank" which is normally filled with a chemical but can be emptied and filled with water by hand in rural areas where no hydrants are available. Tests were conducted on the new truck which features a 4" intake hose and three outlets fitting the standard fire hoses. The test showed that when all three outlet hoses were coupled to one 4" hose with a 2" nozzle it pumped about 1,000 gallons per minute for distance over 300'. The vehicle is capable of travelling at speeds up to 55 miles per hour when being driven to the utmost.



LaFrance Fire Engine, Crystal Falls City Hall, Superior Avenue, Crystal Falls, Iron County, Michigan, ca. 1920-1925: The LaFrance fire engine, weighing 9,000 pounds, was the pride of the Crystal Falls Fire Department, located in the Crystal Falls City Hall on the south side of Superior Avenue. Dating between 1920 and 1925, this photograph shows William H. Cummings seated in the driver's seat. *[William J. Cummings]*