

Diamond Drill

Out of the Past

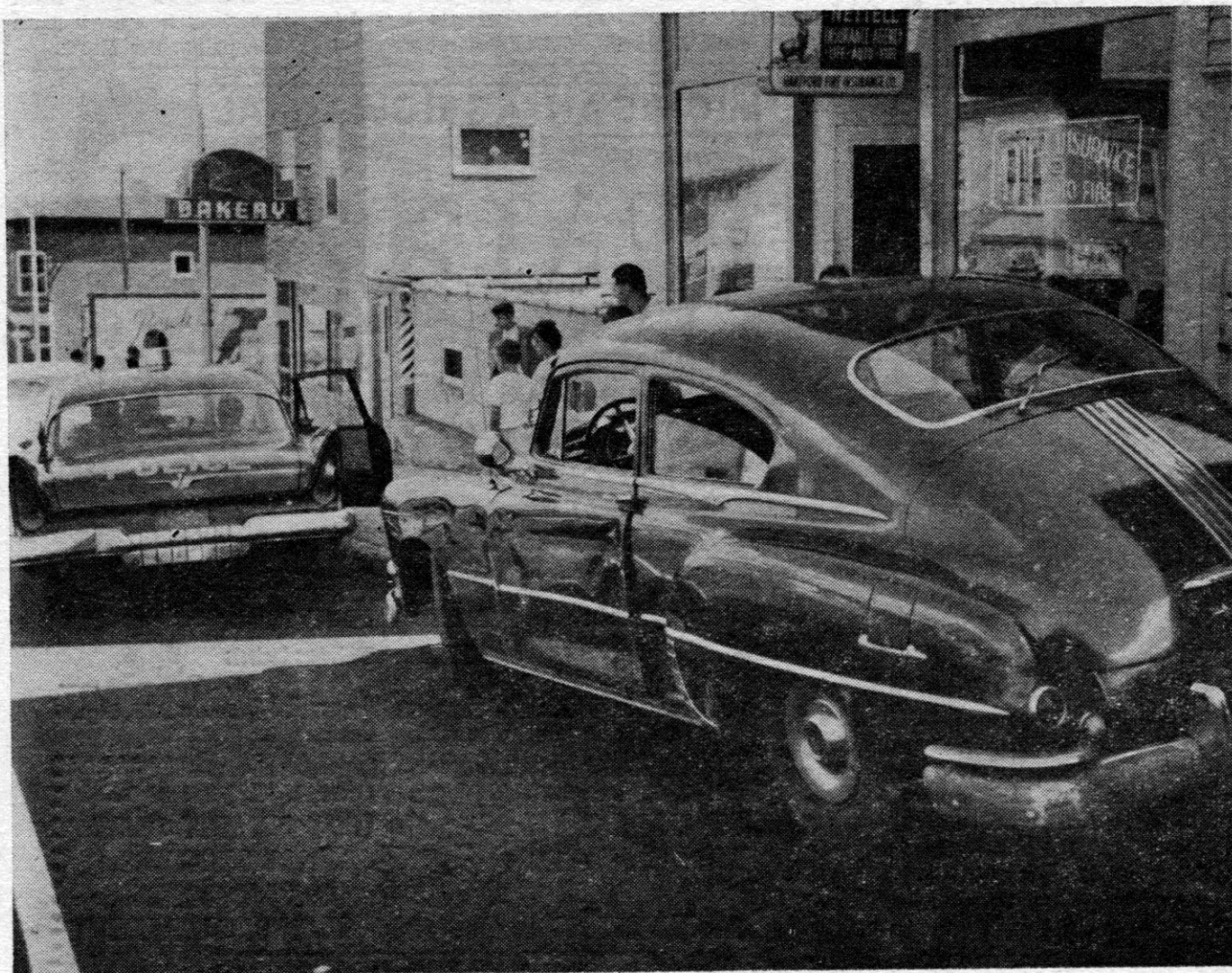
August 20, 1959

Parallel parking became effective of Superior Avenue on Thursday August 13th. The Michigan State Highway Department lined the main street, dividing the 64' wide avenue into six separate lanes, two for parking and four for traffic. Parking space on Superior Avenue has been reduced by about 40%. Parallel parking is mandated because angle parking is not allowed on a State Highway and Superior Avenue is also Hwy M-69. Crystal Falls City crews this week completed the job of marking individual parking spaces in each parking lane.

A 1950 Pontiac automobile had its left side damaged considerably when freed from its uphill parking stall by an underaged "driver" jumped the curb and tried to squeeze into a parking stall occupied by a 1957 Ford owned by Mrs. Emma Bender. Mrs. Dick DeNell, several months pregnant, narrowly escaped serious injury when she attempted to get into her runaway car and became pinned between the rear fenders of the cars as they meshed together. The "driver" of the DeNell auto was her 21- month-old son David who freed the gears allowing the car to coast downhill while she was away momentarily.



PARALLEL PARKING became effective on Superior Avenue last Thursday soon after the State Highway Department equipment shown above lined the main street, dividing the 64-foot wide avenue into six separate lanes, two for parking and four for traffic. Parking space on Superior avenue has been cut by about 40 percent, but traffic flows much faster than before. Parallel parking is a must because angle parking is not allowed on a state highway, and Superior Avenue is also M-69. The city this week completed the job by marking individual parking stalls in each of the parking lanes.



TIGHT SQUEEZE—The 1950 Pontiac shown above had its left side damaged considerably Monday afternoon when freed from its up-hill parking stall by a 21-month-old "driver", it jumped the curb and tried to squeeze into the same parking stall occupied by a 1957 Ford owned by Mrs. Emma Bender, Crystal Falls. Mrs. DeNell narrowly escaped serious injury when she attempted to get into her car and became pinned between the rear fenders of the cars as they ground together. The "driver" of the DeNell car was their 21-month-old son, David, who freed the gears allowing the car to coast downhill while his mother was away momentarily.