

Diamond Drill

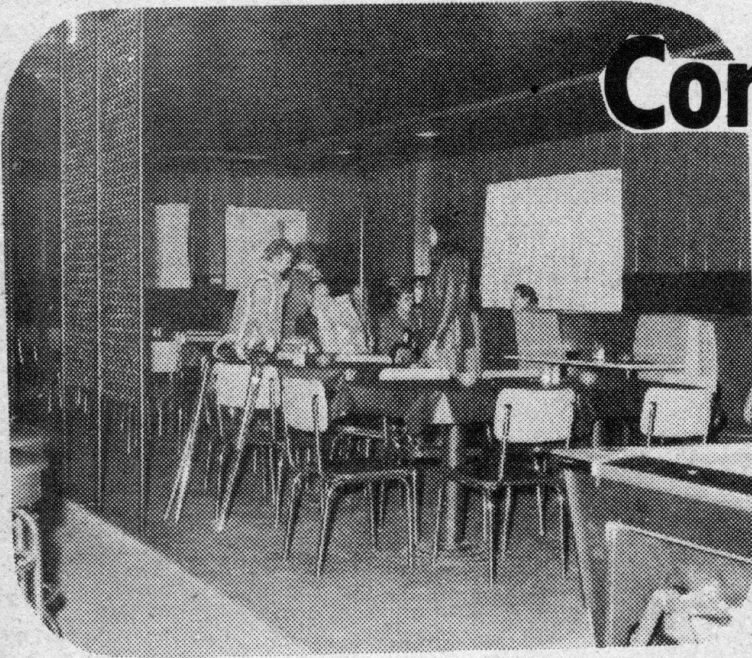
Out of the Past

April 14, 1976

Shirley Koski has opened "Shirley's Steak Corner" as part of the Infield Bar (234 Superior). Infield Bar owners Ticker and Elaine Pretto refurbished the main dining area and completely remodeled the kitchen area to accommodate the new business venture. Koski will offer noon lunches (11AM-2PM) and a full menu of steaks, shrimp and chicken dinners (5PM-11PM) plus fish fries every Friday. Carol James and Delores Yoki have been hired as waitresses.

It has been brought to the attention of the Dickinson-Iron District Health Department that many individuals and private organizations are not aware of the Health Department's temporary food license requirements. Act No.269, Public Acts of 1968, requires that caterers and any other organization preparing and serving food or drink to the public must obtain a temporary food license from the local Health Department. A temporary food service supplier means "any food service establishment which operates at a fixed location for a temporary period of time not to exceed two weeks", such as a carnival, public exhibition, church picnic, weddings or other public gatherings.

Congratulations

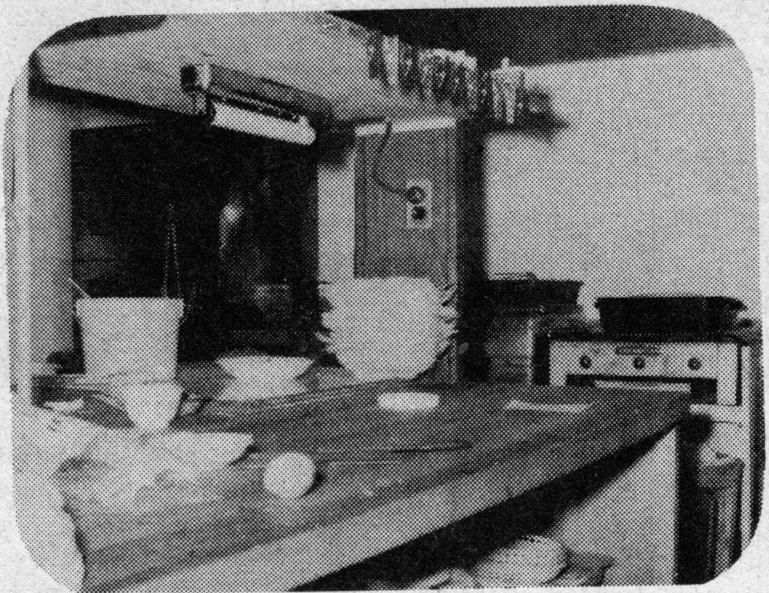


- *Ticker*
- *Elaine*
- *Shirley*

SHIRLEY'S STEAK CORNER

"AT THE INFIELD"

We Wish
You Every
SUCCESS



EAST IRON COUNTY CHAMBER OF COMMERCE



SHIRLEY KOSKI, proprietor of Shirley's Steak Corner at the Infield Bar, has a thing about getting her picture taken, and we were unable to get her to pose in her new kitchen, but two of her waitresses, Delores Yoki, top, and Carol James, bottom, were more coopera-

tive. Shirley, and Ticker and Elaine Pretto of the Infield, cooperated in remodeling and refurbishing the main dining room and a completely new kitchen, part of which is shown in these two photos, has been constructed at the rear of the building.